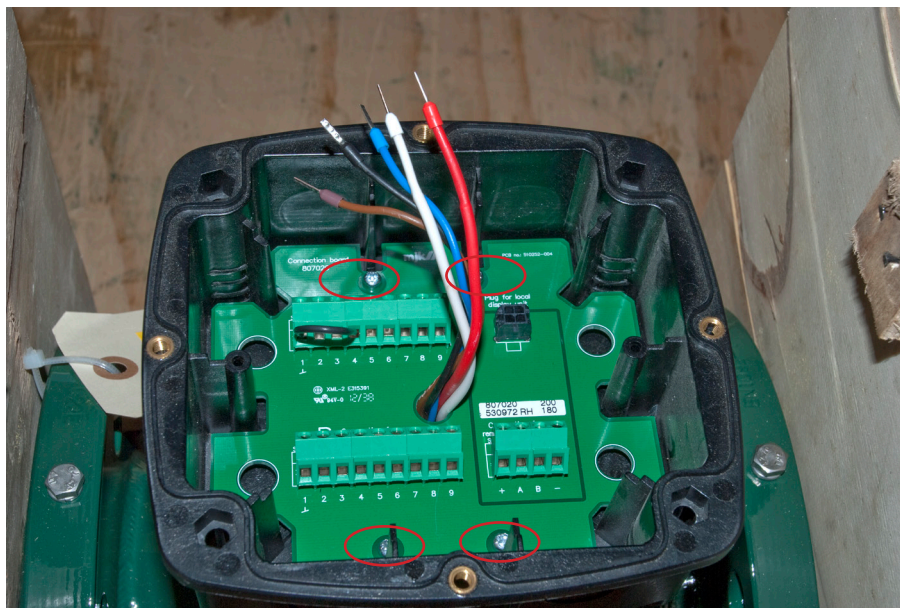
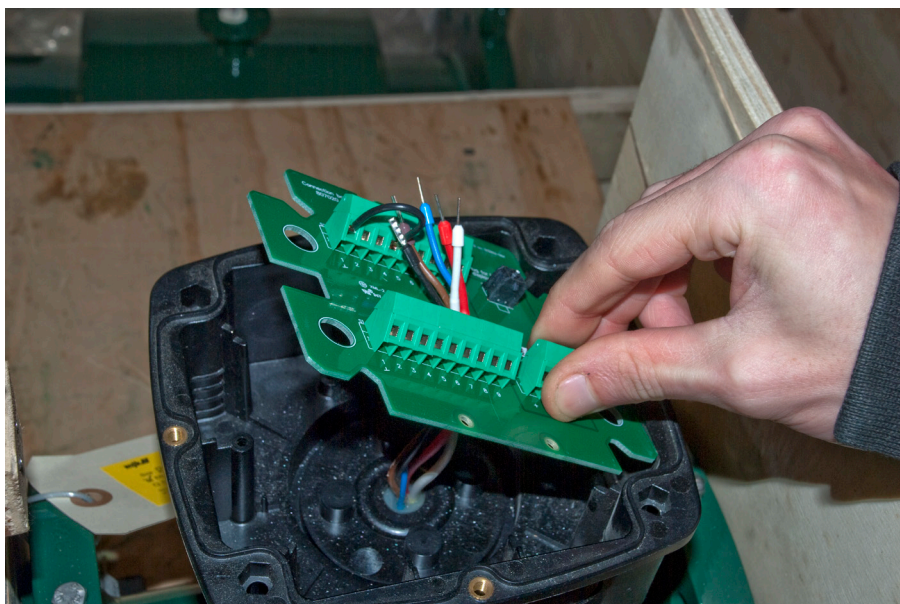


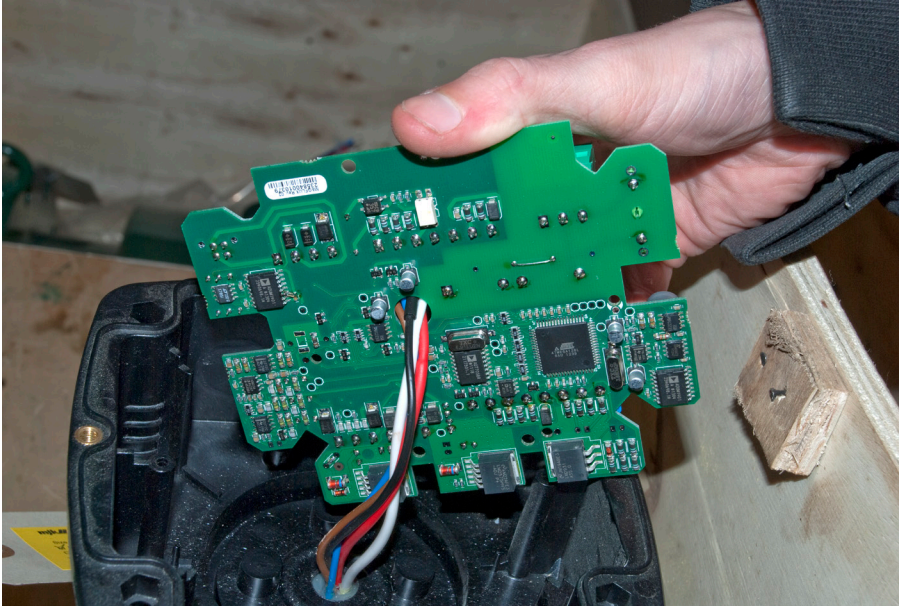
1. Initial view



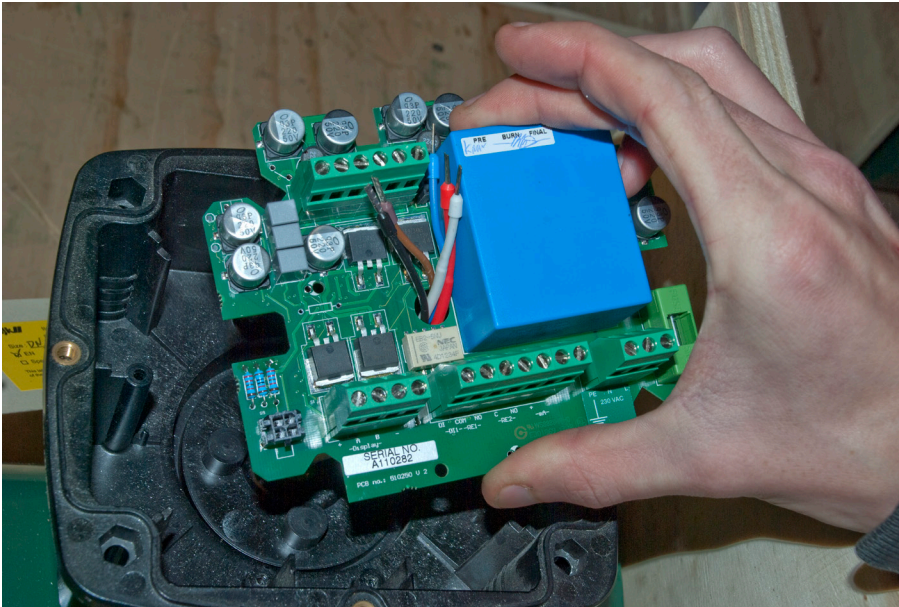
2. Dismount cables and the Connection PC board mounting screws



3. Remove Connection PC board, do not cut cables



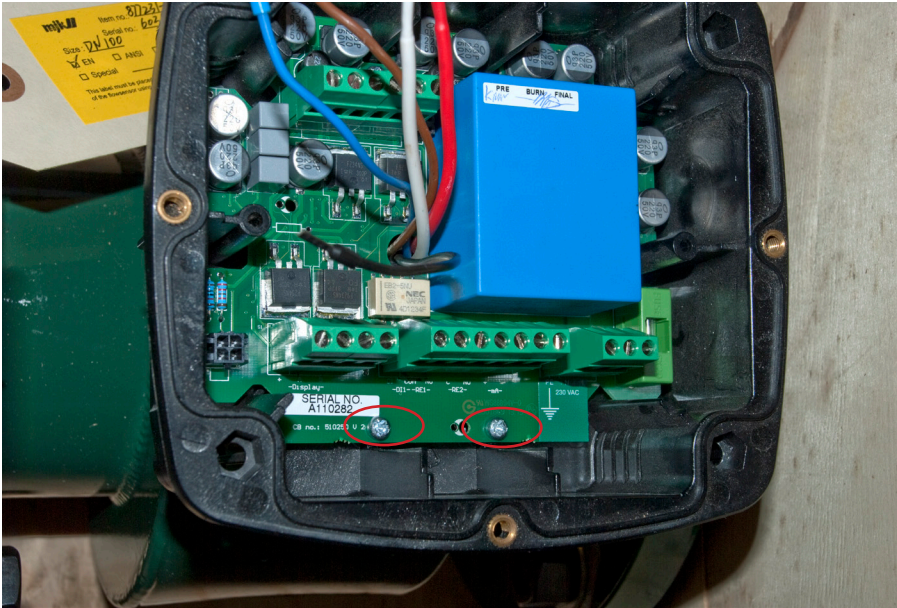
4. Lead cables in center hole on the converter pc board



5. Note correct entry



6. Mount converter pc board in the cabinet



7. Mount converter pc board in the cabinet



8. Lead cables in the metal cover plate



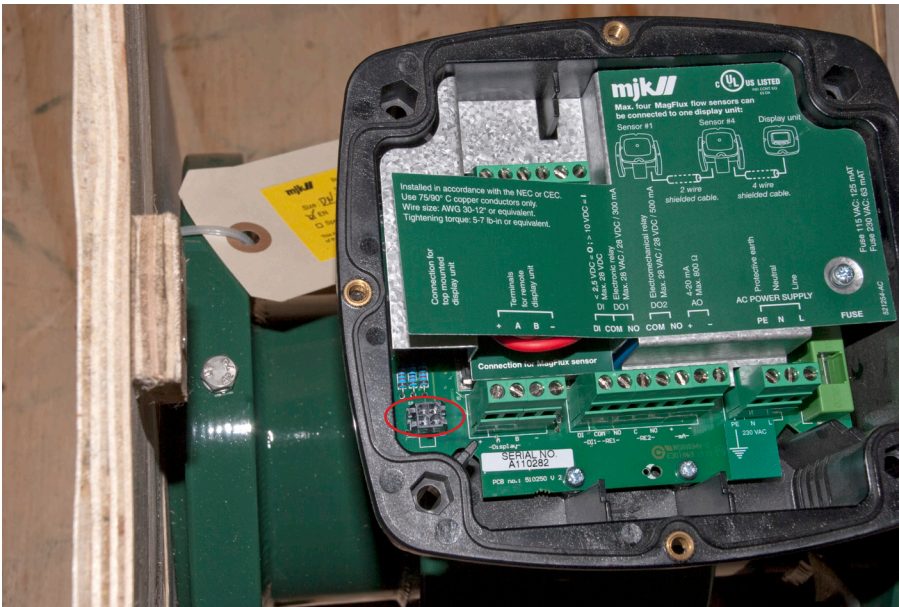
9. Fasten cover plate, using 2 screws

10. Mount cables in the correct terminals

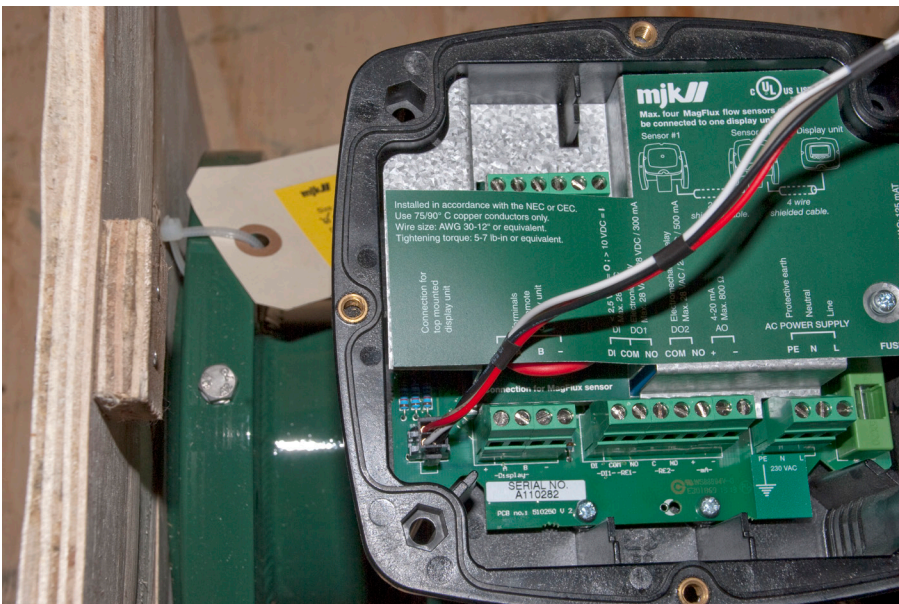
Note the screws securing the cover plate



11. Correct view and note position of the the display



12. Mount cable for display





12. Fasten Display using 4 screws